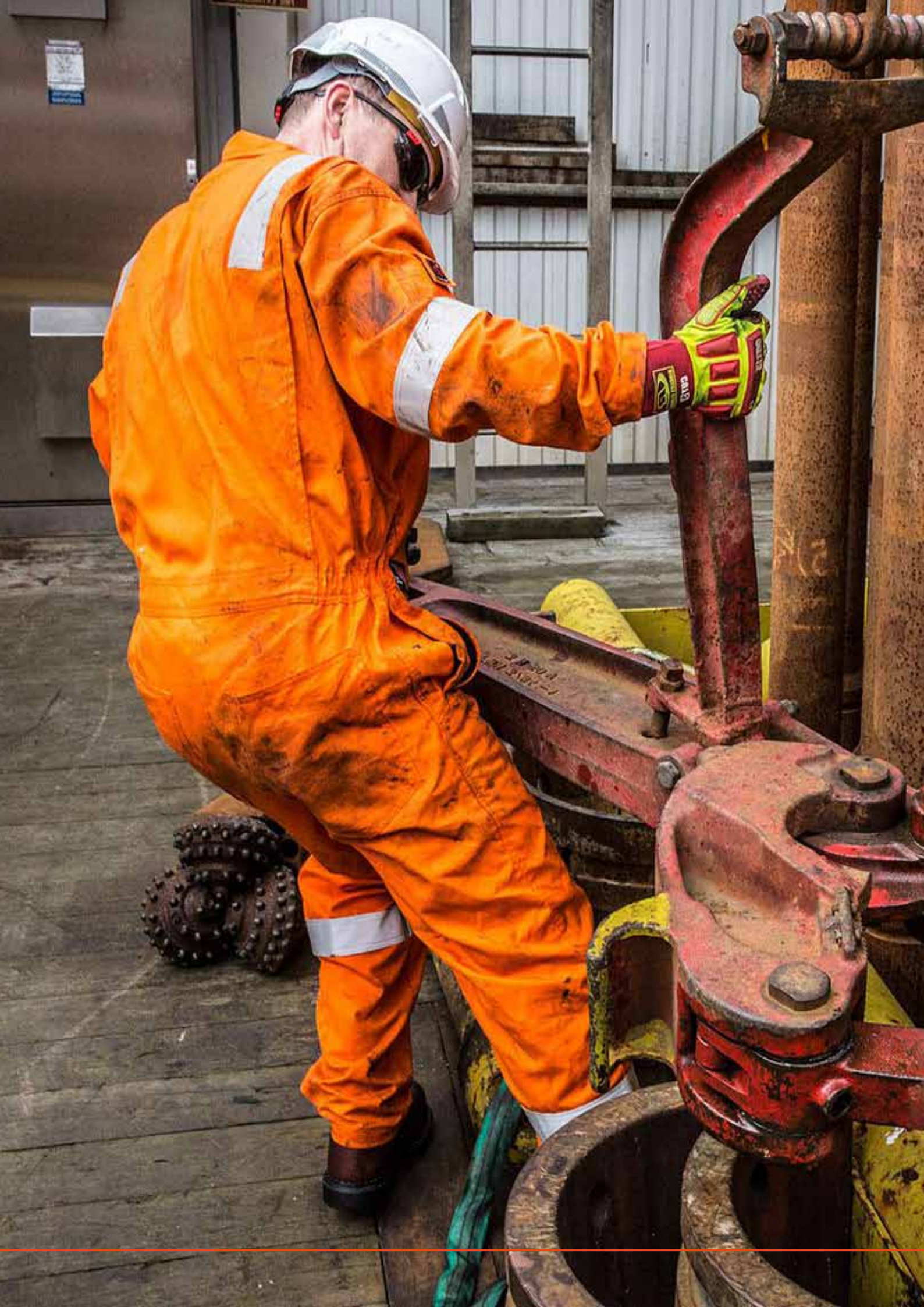


| Safety Equipment

Product Catalogue



Iron shield





Safety Equipment Contents

1. About Us

2. Protective Clothing

3. Foot Protection

4. Head & Face Protection

5. Hand Protection

6. Fall Protection

7. Gas Detection & Respiratory Protection

8. Supplied Air Respirators

9. Fire Fighting & Emergency

10. Contacts



PPE Brands



Protective Clothing

List of Products

- Coveralls
- Jackets
- General Workwear
- Reflective Workwear
- Workwear Customization





Protective Clothing

FLASHGUARD® TM

Lightweight and comfortable, inherently flame-resistant fabric



Inherent FR Fabric FABRIC CODE 11

Weight	Greige 197 g/m (5.8 oz./yd) Finished 220 g/m (6.5 oz./yd)
Blend	48% Tencel, 39% Modacrylic, 12% Aramid, 1% Carbon
Weave	Twill

COMPLIANCE




Heat and Flame	EN ISO 11612 A1 + A2, B1, C1 (single layer) and A1 + A2, B2, C2, F2 (multi-layer) insulated garments
Flashfire	NFPA 2112 UL Recognized Component
Electric Arc Flash	IEC 61482-1-2 (class 1) ASTM F1959 ATPV 9.1 cal/cm2 (HRC 2)
Anti-static	EN 1149-5
Oeko-Tex®	Oeko-Tex® Standard 100 (sets limits for maximum content of formaldehyde, pesticides, PCBs, heavy metals, azo dye, arylamine flame-retarding agents, phthalates, volatile organic substances, biocides and other substances.)
Welding and Allied Processes Protection	EN ISO 11611 (class 1)

STANDARD COLORS

Please confirm availability with your Red Wing representative. Special order colors available upon request.

WASH AND CARE

Standard home, commercial and industrial laundering is appropriate. When laundering instructions are followed, shrinking tolerance is typically 1-3%.

	Machine wash normal: Unlined: max 60° C / 140° F Insulated: max 40° C / 104° F
	Do not bleach
	Iron medium heat: max 150° C / 300° F
	Dry clean: any solvent except trichloroethylene
	Tumble dry normal: low heat
Do not use cleaning agents containing organic soap, chlorine bleach, hydrogen peroxide or any bleaching agent. Do not use softeners or starch.	

FlashGuard TM is a Red Wing-exclusive flame-resistant fabric. It combines innovative tencel fibers that are comfortable and color-fast, with modacrylic fibers that give the fabric its flame-resistant properties. Altogether the proprietary blend creates a superior fabric that is inherently flame-resistant, lightweight and comfortable.

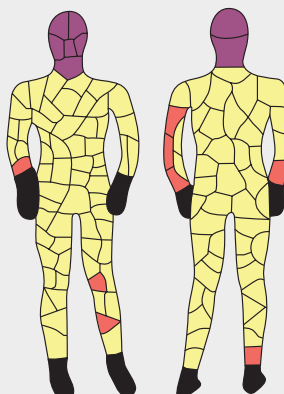
FEATURES

- FlashGuard TM fabric provides comfort, breathability and flexibility, along with the Absorbs moisture and transfers it away from the body, keeping the wearer dry and comfortable
- Extremely lightweight, performs well in a variety of climates, and is particularly well suited for hot and humid conditions

FLAME-RESISTANT PROPERTIES

- When exposed to flash flame, FlashGuard TM fabric fibers carbonize and will not melt or drip, forming a barrier to minimize burns to the wearer's skin
- Inherently flame-resistant, with FR properties that last throughout the fabric's lifetime, regardless of washing frequency

PERFORMANCE



Total Burn Area 13.11%* (Including head and neck)

	Invalid Sensor
	No Burn
6.56%	Total 2nd Degree Burn
0.00%	3rd Degree Burn (body)
6.56%	3rd Degree Burn (head/neck)
6.56%	Total 3rd Degree Burn**

* Total Burn Area excluding head/neck not covered by fabric: 6.56%

** 3rd Degree Burn Area excluding head/neck not covered by fabric: 0.00%

Test conducted by the Textile Protection and Comfort Center College of Textiles, North Carolina State University Raleigh, North Carolina, USA

DALETEC

Comfortable, engineered flame-resistant fabric



Daletec flame-resistant fabric is strong, yet comfortable and it offers the easywearing properties of cotton.

FEATURES

- Made of cotton, Daletec fabric is soft, pliable and can be comfortably worn directly against the skin.
- Due to its molecular structure, cotton is warmer in cold weather and cooler in hot weather than many synthetic fabrics.
- Cotton fibers are spun to maximize fabric strength and durability.
- Like other natural fabrics, Daletec fabric absorbs and transfers moisture away from the body to keep the wearer dry and comfortable.
- Lightweight and breathable, Daletec fabric performs well in a variety of climate applications. It is especially well-suited for hot or humid applications.

FLAME-RESISTANT PROPERTIES

- Daletec fabric provides protection against accidental flash fires and heat. It is engineered not to ignite, melt, drip or expose the skin of the wearer.
- Flame-resistant characteristics last throughout the Daletec fabric's lifetime, regardless of washing frequency when care instructions are followed.

Total Burn Area 34.43%* (Including head and neck)

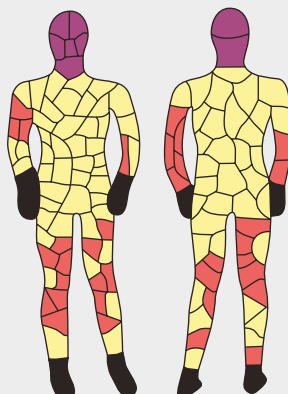
	Invalid Sensor
	No Burn
27.87%	Total 2nd Degree Burn
0.00%	3rd Degree Burn (body)
6.56%	3rd Degree Burn (head/neck)
6.56%	Total 3rd Degree Burn**

* Total Burn Area excluding head/neck not covered by fabric: 27.87%

** 3rd Degree Burn Area excluding head/neck not covered by fabric: 0.00%

Test conducted by the Textile Protection and Comfort Center College of Textiles, North Carolina State University Raleigh, North Carolina, USA

PERFORMANCE



Treated FR Fabric FABRIC CODE 15

Weight	Greige 200 g/m2 (5.9 oz./yd2) Finished 220 g/m2 (6.5 oz./yd2)
Blend	98% Cotton, 2% Carbon, Pyrovatex Treated
Weave	Twill 2/1

COMPLIANCE

Heat and Flame	EN ISO 11612 A1 + A2, B1, C1 (single layer) and A1 + A2, B2, C2, F2 (multi-layer) insulated garments
Electric Arc Flash	IEC 61482-1-2 (class 1)
Anti-static	EN 1149-5
Oeko-Tex®	Oeko-Tex® Standard 100 (sets limits for maximum content of formaldehyde, pesticides, PCBs, heavy metals, azo dye, arylamine flame-retarding agents, phthalates, volatile organic substances, biocides and other substances.)

STANDARD COLORS Please confirm availability with your Red Wing representative. Special order colors available upon request.

WASH AND CARE

Standard home, commercial and industrial laundering is appropriate. When laundering instructions are followed, shrinking tolerance is typically 3-5%.

- Machine wash normal:
Unlined: max 60° C / 140° F
Insulated: max 40° C / 104° F
- Do not bleach
- Iron medium heat:
max 150° C / 300° F
- Dry clean:
any solvent except trichloroethylene
- Tumble dry normal:
low heat

Do not use cleaning agents containing organic soap, chlorine bleach, hydrogen peroxide or any bleaching agent.

Do not use softeners or starch.
Do not use acids or sour rinse.

Protective Clothing

LIGHTWEIGHT COTTON & POLYESTER/COTTON

Durable and comfortable on the job.

Red Wing industrial workwear garments made from cotton or a polyester/cotton blend deliver comfort and confidence for workers across the globe. These versatile and durable products meet our high standards for superior construction, and are rigorously tested for fit, wear and comfort. With the wearer's needs always our top concern, each garment is designed to meet a specific task. We understand that superior comfort is a necessity.

COTTON FEATURES

- Soft, lightweight and pliable, cotton fabric can be comfortably worn directly against the skin.
- Extremely versatile, cotton adds warmth in cold weather and also breathes and feels cooler than many synthetic fabrics in warm conditions.
- As a natural fabric, cotton has the ability to attract moisture and transfer it away from the body, keeping the wearer dry and comfortable.
- Predictably durable, cotton offers good wear and performance.
- Lightweight and breathable, 6 oz. (200 g) cotton fabric performs well in a variety of conditions and is particularly well-suited

POLYESTER/COTTON FEATURES

- Made of a blend that includes durable polyester and comfortable cotton this pliable fabric can be worn directly against the skin or over inner layers as an outer shell.
- Ability to attract moisture and transfer it away from the body, keeping the wearer dry and comfortable.
- Predictably durable, the polyester/cotton blend offers excellent wear and performance.
- Lightweight, breathable and versatile, 6 oz (200 g) polyester/cotton blend fabric performs well in a variety of climate conditions and is particularly well-suited for use in temperate climates.

Non-FR Fabric FABRIC CODE 40

Weight	6 oz./yd2 (200 g/m2)
Blend	100% Cotton
Weave	Twill

COMPLIANCE

Oeko-Tex®	Oeko-Tex® Standard 100 (sets limits for maximum content of formaldehyde, pesticides, PCBs, heavy metals, azo dye, arylamine flame-retarding agents, phthalates, volatile organic substances, biocides and other substances.)
-----------	--

STANDARD COLORS

Please confirm availability with your Red Wing representative. Special order colors available upon request.

WASH AND CARE

Standard home, commercial and industrial laundering is appropriate. When laundering instructions are followed, shrinking tolerance is typically 3-5% (Fabric Code 50) and 2-3% (Fabric Code 65).

	Machine wash normal:
🧺	Unlined: max 60° C / 140° F
	Insulated: max 40° C / 104° F

🚫	Do not bleach
---	---------------

🧊	Iron medium heat: max 150° C / 300° F
---	--

Ⓟ	Dry clean: any solvent except trichloroethylene
---	--

🌀	Tumble dry normal: low heat
---	--------------------------------

Do not use cleaning agents containing organic soap, chlorine bleach, hydrogen peroxide or any bleaching agent.
Do not use softeners or starch.



Workwear Fit

Purpose-built for the work you do, our industrial workwear is designed to fit so well, so comfortably, that it may not even seem like personal protective equipment. Key measurements necessary to ensure the best possible fit include: Height, Neck, Chest, Waist, and Inseam. Refer to each product listing for specific measurements.

For best fit, measurements should be taken directly from the body. (Room for movement is already calculated into garment dimensions.)

For ALL Coverall sizing – Please see Page 14

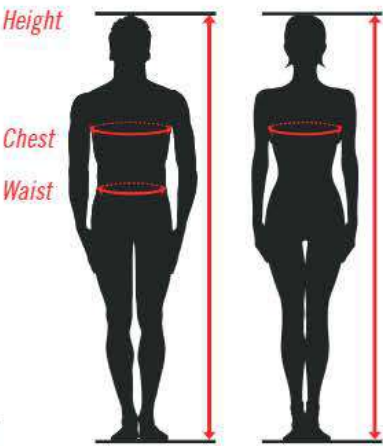
For ALL Jackets sizing – Please see Page 17

WORKWEAR FIT

Key measurements to ensure proper garment fit.

Purpose-built for the work you do, our industrial workwear is designed to fit so well, so comfortably, that it may not even seem like personal protective equipment. Key measurements necessary to ensure the best possible fit include: Height, Neck, Chest, Waist, and Inseam.

For best fit, measurements should be taken directly from the body. (Room for movement is already calculated into garment dimensions.)



Stocked sizes will vary by location. Refer to each product listing for specific size availability in your region.

MEN'S UNLINED COVERALL			
CHEST	EU/RU EQUIVALENT	INCH/CM EQUIVALENT	
32	42	30"-32"	76-82 cm
34	44	32"-34"	82-86 cm
36	46	34"-36"	86-92 cm
38	48	36"-38"	92-97 cm
40	50	38"-40"	97-102 cm
42	52	40"-42"	102-107 cm
44	54	42"-44"	107-112 cm
46	56	44"-46"	112-117 cm
48	58	46"-48"	117-122 cm
50	60	48"-50"	122-127 cm
52	62	50"-52"	127-132 cm
54	64	52"-54"	132-137 cm
56	66	54"-56"	137-142 cm
58	68	56"-58"	142-147 cm
60	70	58"-60"	147-152 cm
62	72	60"-62"	152-157 cm
64	74	62"-64"	157-163 cm
66	76	64"-66"	163-168 cm
68	78	66"-68"	168-173 cm
70	80	68"-70"	173-178 cm
HEIGHT	INCH/CM EQUIVALENT		
Short	up to 5' 9"	up to 175 cm	
Regular	up to 6' 1"	up to 185 cm	
Tall	up to 6' 4"	up to 193 cm	
Extra Tall	6' 4" and up	193 cm and up	

WOMEN'S UNLINED COVERALL			
US WOMEN'S	EU/RU EQUIVALENT	CHEST INCH/CM EQUIVALENT	
4	32	32"	81 cm
6	34	34"	86 cm
8	36	36"	92 cm
10	38	38"	97 cm
12	40	40"	102 cm
14	42	42"	107 cm
16	44	44"	112 cm
18	46	46"	117 cm
20	48	48"	122 cm
22	50	50"	127 cm
24	52	52"	132 cm
26	54	54"	137 cm
HEIGHT	INCH/CM EQUIVALENT		
Short	up to 5' 3"	up to 160 cm	
Regular	up to 5' 7"	up to 170 cm	
Tall	5' 8" and up	171 cm and up	

MEN'S JACKET		
CHEST	INCH/CM EQUIVALENT	
XXS	32"-34"	82-86 cm
XS	34"-36"	86-92 cm
S	36"-38"	92-97 cm
M	38"-42"	97-107 cm
L	42"-46"	107-117 cm
XL	46"-50"	117-127 cm
2XL	50"-54"	127-137 cm
3XL	54"-58"	137-147 cm
4XL	58"-62"	147-157 cm
5XL	62"-66"	157-168 cm
6XL	66"-70"	168-178 cm
HEIGHT	INCH/CM EQUIVALENT	
Regular	up to 6' 1"	up to 185 cm
Tall*	up to 6' 4"	up to 193 cm

* Shirts, jackets, lab/shop coats: tall not available in XXS chest size

Footwear Size Comparison Chart

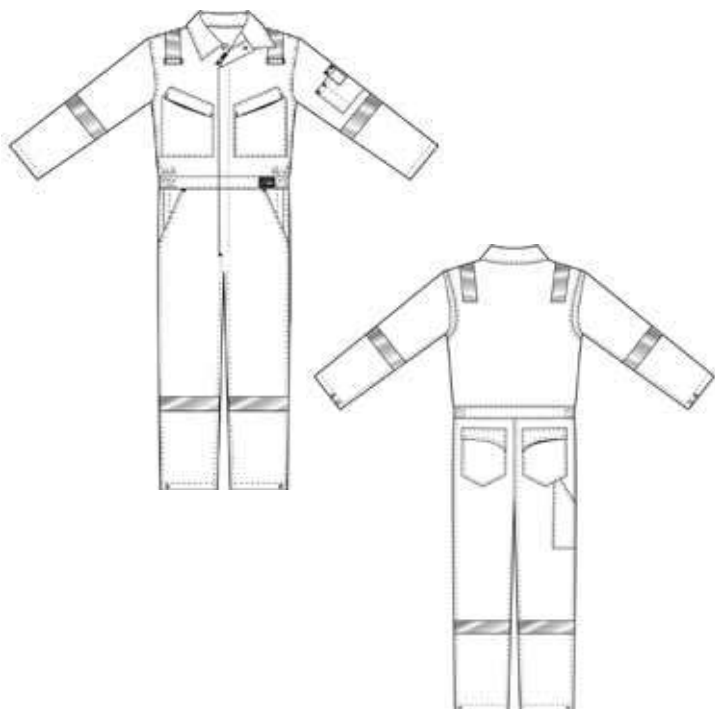
For most common International systems

USA Men's			3.5	4	4.5	5	5.5	6	6.5	7	7.5	8	8.5	9	9.5	10	10.5	11	11.5	12	13	14	15	16
USA Women's	4	4.5	5	5.5	6	6.5	7	7.5	8	8.5	9	9.5	10	10.5	11	12								
European	33.5	34	34.5	35	36	37	37.5	38	38.5	39	40	41	41.5	42	42.5	43	43.5	44	45	46	47	48	49	50
British	1.5	2	2.5	3	3.5	4	4.5	5	5.5	6	6.5	7	7.5	8	8.5	9	9.5	10	10.5	11	12	13	14	15
cm Men's			21.5	22	22.5	23	23.5	24	24.5	25	25.5	26	26.5	27	27.5	28	28.5	29	29.5	30	31	32	33	34
cm Women's	21	21.5	22	22.5	23	23.5	24	24.5	25	25.5	26	26.5	27	27.5	28	28.5								

Coveralls

61111 / 61115

Men's FR and Non-FR Coverall



- FLAME RESISTANT**
- ANTI-STATIC**
- ELECTRIC ARC FLASH**
- CATEGORY 2**

Description:

This coverall has a classic look and a great fit. It features eight pockets and non-sparking YKK® zips throughout. 100% brass press studs are covered on the inside, so no brass comes in contact with your skin. Major seams are double-stitched and stress points are bar-tacked for strength. 2" (50 mm) reflective FR striping can be added for better visibility and safety.

- Elasticized waistband
- 2" (50mm) wide reflective FR striping around arms, legs and over the shoulders
- Two radio loops
- Concealed two-way, black high-density polyester coil zip with press stud closure
- Concealed press button on cuffs
- One back pocket
- Two chest pockets with flaps, right pocket with a concealed zip closure, left pocket with pen sleeve pocket
- Shoulder pleats for freedom of movement and comfort
- Two side pockets with hidden exterior-to-interior access

Colors Available:

- Red
- Navy Blue

Product Number	Non Reflective	61111	61115
FABRIC MATERIAL			
Red Wing FlashGuard® TM		●	
Daletec®			●
FABRIC WEIGHT			
6.5 oz / 220g		●	●
INTERNATIONAL STANDARDS			
EN ISO 11612		●	●
EN 1149-5		●	●
NFPA 2112 UL recognized		●	●
IEC 61482-2 (Class 1)		●	●

Protective Clothing - Coveralls

71111

Men's FR Coverall



FLAME RESISTANT



ANTI-STATIC



ELECTRIC ARC FLASH



CATEGORY 2

Description:

This deluxe coverall fits great and features eight pockets and YKK® non-sparking, brass press studs throughout. 100% brass press studs are covered on the inside so nothing but soft, protective material comes in contact with your skin. Major seams are triple-stitched and stress points are bar-tacked for strength. 1" (25 mm) reflective striping applied to shoulders is equal in length on the front and back.

- Concealed two-way, YKK® brass zips with brass snap closure
- Two chest pockets with concealed zip closure
- Sleeve pocket for mobile phone and pen
- Elasticized waistband
- Two side pockets with hidden exterior-to-interior access through pocket lining
- Action back pleats for freedom of movement and comfort
- Two back pockets, one with flap (right)
- Ruler and tool pocket on right leg
- Internal knee pad pockets (knee pads sold separately)
- Concealed YKK® brass press studs throughout
- 1" (25mm) wide reflective FR striping around arms, legs and over the shoulders

Colors Available:



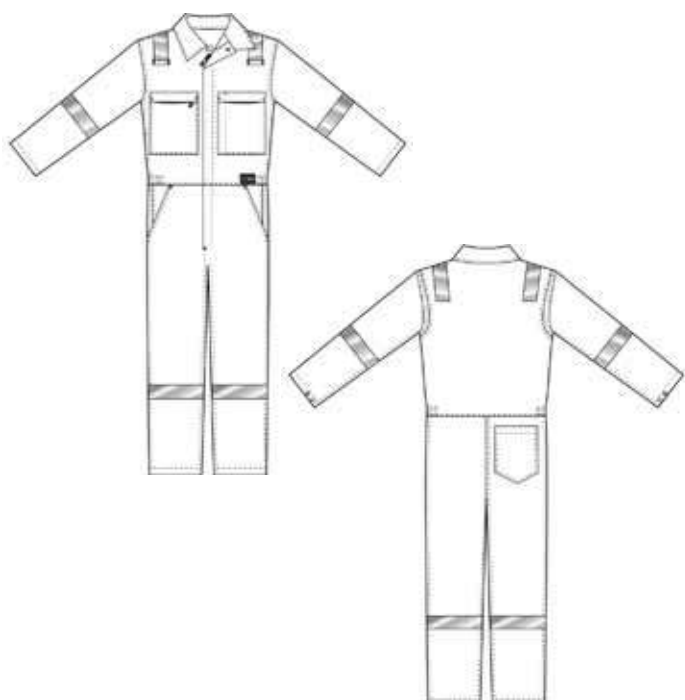
Royal Blue

SIZING			
CHEST	EU	INCH / CM	
36	46	34"-36"	86-92 cm
38	48	36"-38"	92-97 cm
40	50	38"-40"	97-102 cm
42	52	40"-42"	102-107 cm
44	54	42"-44"	107-112 cm
46	56	44"-46"	112-117 cm
48	58	46"-48"	117-122 cm
50	60	48"-50"	122-127 cm
52	62	50"-52"	127-132 cm
54	64	52"-54"	132-137 cm
56	66	54"-56"	137-142 cm
HEIGHT	INCH / CM		
Regular	upto 6'1"	upto 185cm	

Product Number	Non Reflective	71111
FABRIC MATERIAL		
Red Wing FlashGuard® TM		●
FABRIC WEIGHT		
6.5 oz / 220g		●
INTERNATIONAL STANDARDS		
EN ISO 11612		●
NFPA 2112 UL Recognized		●
Electric Arc Flash (IEC 61482-1-2)		●
HRC 2 (Hazard Risk Rating)		●
Anti-static (EN 1149-5)		●

61615

Men's FR Coverall



FLAME RESISTANT



ANTI-STATIC



ELECTRIC ARC FLASH



CATEGORY 2

Description:

This coverall has a great look and fit. It features five pockets and concealed non-sparking YKK® front zipper and 100% brass press stud covered on the inside, so no brass comes in contact with your skin. Major seams are double- or triple-stitched, with stress points bar-tacked for added strength. 2" reflective striping added for better visibility and safety.

- Elasticized waistband
- 2" (50mm) wide reflective FR striping around arms, legs and over the shoulders
- Two radio loops
- Concealed two-way, black high-density polyester coil zip with press stud closure
- Concealed press button on cuffs
- One back pocket
- Two chest pockets with flaps, right pocket with a concealed zip closure, left pocket with pen sleeve pocket
- Shoulder pleats for freedom of movement and comfort
- Two side pockets with hidden exterior-to-interior access

Colors Available:



Tan



Navy Blue

Product Number	Non Reflective	61615
FABRIC MATERIAL		
Datetec®		●
FABRIC WEIGHT		
6.5 oz / 220g		●
INTERNATIONAL STANDARDS		
EN ISO 11612		●
EN 1149-5		●
NFPA 2112 UL recognized		●
IEC 61482-2 (Class 1)		●

UFCU

**Men's
DUCK
Coverall**

INSULATED



MADE IN USA

The protection you need, the comfort you want. When it's far below freezing and you're needed, you'll be glad you've got full body insulated coverage and all the features you need .

Shell: 100% Cotton 12 oz Premium Duck with durable water repellent finish
Lining: 100% Polyester quilted to 6 oz polyester insulation

Features :

- Two-way heavy duty brass front zipper
- Zip-though Corduroy collar
- Detachable hood with snaps and adjustable draw cord hood
- Loss-proof chest with flap and hook and loop closure
- Upper chest patch pocket with pencil pocket
- Two lower slash pockets
- Knit storm cuffs at inner sleeve hem
- Sleeve Pencil pocket
- Exclusive Full-chap double front leg
- Knee pad pockets
- Ankle to hip heavy duty two way brass zippers
- Turned under hem allows for 3" tall leg extensions
- Raised ankle zip for easy hemming
- Two rear patch pockets
- Hammer loop and ruler pocket
- Back hem reinforced with double layer
- Duck fabric
- Back waist elastic
- Triple stitched
- Brass rivets and barracks at stress points
- Waterproof knee and seat

By Order

INHERENT FLAME RETARDANT COVERALL



Model	ANTHEMID 185
Fabric	98% Anthemid + 2% Anti-Static
Brand	ANTHEM
GSM	180 GSM + 5%
Seams Stitch	Aramid Thread
Sizes	XS - 4X
Treatment	OIL Water Repellent
Additions	HIGH Visibility Reflective Tapes. Customised Logos + Name Plate
Standards	ISO EN 11611, 11612, NFPA 2112 , EN 1149-3, 4 cal\cm2 EN 61482-2
Fabric Feature	Permanent Flame Retardant, Anti-Static. Desert Cool Feature. Cool Breathable. Soft Comfort feel ,Highly durable. Industrial wash friendly (up to 90 C), Wrinkle-resistant, Shrinkage after 5 washings: not more than 3%,
Zipper:	Front closure with metal zippers and concealed flap Placket Adjustable Flexible Arm Cuffs
Colours	Navy Blue, Light Blue, Royal Blue, Grey, Khaki, Red, Orange Dyed To Match with MOQ.

Garment Made in India
Designed & Engineered in USA



DESIGN 1



DESIGN 2



DESIGN 3



DESIGN 4

Protective Clothing - Jackets

69007

Soft Shell Jackets



Description:

This functional soft-shell jacket is water-resistant and fully-lined for warmth.

Features:

- High collar
- Draw cords at waist
- Sleeve pocket with zip closure
- Full length zip closure
- Chest pocket with zip closure
- Two side pockets with zip closure
- Elasticized cuffs with thumb holder

Material:

93% Polyester/7% Spandex

Colors Available:

 Black / Red

76182

Soft Shell Jackets



Description:

This functional soft-shell jacket is water-resistant and fully-lined for warmth.

Features:

- High collar
- Draw cords at waist
- Sleeve pocket with zip closure
- Full length zip closure
- Chest pocket with zip closure
- Two side pockets with zip closure
- Elasticized cuffs with thumb holder

Material:

93% Polyester/7% Spandex

Colors Available:

 Navy Blue

69018

Soft Shell Jacket



Description:

This hip-length jacket offers heavy-duty YKK zips and is Polar Fleece lined for warmth. Wind proof (TPU membrane), water repellent, and breathable.

Features:

- Full length zip closure
- Draw cord at bottom of jacket
- Chest pocket with zip closure
- Two side pockets with zip closure
- High collar with fleece lining
- Wrist sleeve with thumb hole

Material:

90% Polyester, 10% Cotton

Colors Available:



Grey

62360

Temperature Jacket/ insulated



Insulated

MATERIAL:

60% Cotton/40% Polyester (Quality 60) 6.5 oz/ yd ²/220 g/m²

COLORS:

Navy Blue(53), Graphite Gray(56),

: DESCRIPTION

This hip-length jacket offers a heavy-duty zip and is fully insulated with polyester fiberfill. Major seams are double- or triple- stitched and stress points are bar-tacked for strength

- Double pen pocket on left sleeve
- Two deep, vertical-opening front pockets
- Concealed hood tucks into collar
- Concealed press button on cuffs
- Concealed one-way, black coil high density polyester zips with brass snap closure



Grey

Protective Clothing - General Workwear

62140

TEMPERATE JACKET



This roomy work jacket features seven pockets, adjustable waistband and YKK® non-sparking front zip throughout. All major seams are double or triple-stitched and stress points are bar-tacked for strength. 2"/50 mm wide FR striping for better visibility and safety

Material
Non-FR Cotton (Quality 40) 6 oz/yd²/200 g/m² 100%

Colors
Graphite Gray(56)

- Features**
- Adjustable waistband
 - Two large side pockets
 - Two radio loops
 - Concealed press button on cuffs
 - Concealed one-way, black high-density polyester coil zip with brass snap closure
 - Left sleeve pocket with pen pocket divider, small flap with hook-and-loop closure
 - Shoulder pleats for freedom of movement and comfort
 - Right chest pocket with snap closure and separate mobile phone pocket



76167

FR Temperture Jacket



This roomy work jacket features seven pockets, adjustable waistband and YKK® non-sparking front zip throughout. All major seams are double or triple-stitched and stress points are bar-tacked for strength. 2"/50 mm wide FR striping for better visibility and safety

Material
International standard EN 531

Colors
Graphite Gray(56)

- Features**
- Large Pleated in the back for freedom and movement and comfort
 - Gas Detector and Pen Pocket on the left sleeve
 - Concealed Front Zip
 - Adjustable waistband
 - Two Chest Pocket with flaps , one with separate mobile Phone Pocket
 - Adjustable Cuffs
 - Two Large side Pocket
 - Reflective Tape on shoulders and arms 2 Inch
 - 3M Thinsulate - Insulation
 - FR Lining





Workwear Customization

With our in-house designated team, we are able to help provide our clients with customized corporate branding embroidery and reflective taping of the highest quality on all Protective Clothing including Coveralls, Jackets and Shirts and T-Shirts.

Embroidery & Patches

- /// Digital artwork design of company logos and names
- /// Direct Embroidery - Logo and/or Name
- /// Patch Embroidery - Logo and/or Name

*Front Chest, Back and Shoulder options ALL available.

Reflective Taping

2" (50mm) reflective taping option on Arms, Shoulders, Back and Legs.





Foot Protection

List of Products

- Oxford Safety Shoes
- Lace-ups Safety Boots
- Pull-on Rigger Boots
- PVC Safety Boots
- Accessories



Foot Protection

SPECIFICATION



6647 MEN'S SLIP-ON

- 01 – UPPER DESIGN
Provides a comfortable fit and casual look
- 02 – NANO COMPOSITE TOE
Protects toes with less weight and bulk
- 03 – REMOVABLE PU FOOTBED
Absorbs shock and improves comfort
- 04 – POLYURETHANE MIDSOLE
Enhances underfoot comfort, flexibility and durability
- 05 – STARGRIP® X2 RUBBER OUTSOLE

Footwear Size Comparison Chart

For most common International systems
Please note that there is no real standard for converting shoes. Your best option is to have your foot measured professionally at a local shoe store and get the Men's and Women's sizes directly from the measurement device.

USA Men's			3.5	4	4.5	5	5.5	6	6.5	7	7.5	8	8.5	9	9.5	10	10.5	11	11.5	12	13	14	15	16	
USA Women's	4	4.5	5	5.5	6	6.5	7	7.5	8	8.5	9	9.5	10	10.5	11	12									
European	33.5	34	34.5	35	36	37	37.5	38	38.5	39	40	41	41.5	42	42.5	43	43.5	44	45	46	47				
British	1.5	2	2.5	3	3.5	4	4.5	5	5.5	6	6.6	7	7.5	8	8.5	9	9.5	10	10.5	11	12	13	14	15	
cm Men's			21.5	22	22.5	23	23.5	24	24.5	25	25.5	26	26.6	27	27.5	28	28.5	29	29.5	30	31	32	33	34	
cm Women's	21	21.5	22	22.5	23	23.5	24	24.5	25	25.5	26	26.5	27	27.5	28	28.5									

ST Steel Toe

AT Aluminum Toe

NT Non-Metallic Toe

EH Electrical Hazard

PR Puncture Resistant

 Static-Dissipative

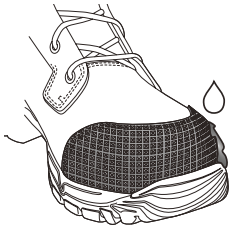
 Waterproof



ForceGuard™

Added protection for durability
This technology is a protective covering that provides long-wearing abrasion, oil and chemical resistance on critical areas of the boot.

Rubber covering for durability





Red Wing Leather

Handcrafted leather from S.B. Foot Tanning Co.

Starting with hides from U.S. raised cattle with minimal surface imperfections, we control every step of the process, using time-honored techniques to craft leather with natural beauty and unmatched durability.



Slip-resistant Outsoles

Performance on slippery surfaces

Soles that have been designed and tested to perform on slippery surfaces.

Soles identified as SRC meet the standard listed with each product.



SuperSole®

Comfort inside. Durable outside.

Single density urethane sole designed to provide durability and comfort. It delivers performance factors of abrasion resistance, cut resistance, traction, and oil and chemical resistance.



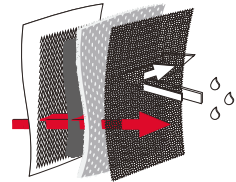
Mini Lug SuperSole®



Red Wing Waterproof

3-layers for waterproof protection

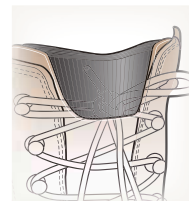
This system uses a 3-layer approach to keep feet dry. 1 - Linings help move moisture away from the foot to keep it dry. 2 - Foam provides cushioning and a comfortable fit. 3 - A waterproof bootie is a barrier to keep water out. Tricot, a protective material, is applied to the outside of the bootie to ensure a complete waterproof system.



Cushin

Comfort tongue technology

Minimizes pressure some workers feel on their shin or ankle from the top of the boot tongue. A four-way stretch nylon offers relief and flexibility while walking, and an internal padded waffle mesh maintains premium comfort.



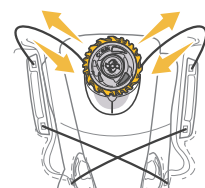
Minimizes pressure on shin.



Boa® Lacing System

Revolutionary closure system

Boa® technology makes getting in and out of lace-up boots faster and easier than ever. Turn the dial to tighten laces to the perfect tension, with no pressure points. One click of the reel releases the laces instantly.



Quick on and off convenience.

Foot Protection

8264

SUPERSOLE® Men's 9-inch Pull-On Boot



Features:

Upper: Finished Split Brown Leather

Toe: Steel Toe

Rating: ASTM F2413-11, M/I/75/C/75, EH PR

Size: EEE 6-12,13,14



Clearance * 8212

SUPERSOLE® Men's Chukka



: Features

Upper: Abrasion Resistant Nylon and TPU

Toe: Steel Toe

Rating: ASTM F2413-11
M/I/75/C/75, M/I/75, EH



Clearance * 8231

SUPERSOLE® Men's 11-inch Pull-On Boot



: Features

Upper: Full Grain, Water-Resistant Brown Boomer Leather

Toe: Steel Toe

Rating: ASTM F2413-11
M/I/75/C/75, EH PR



Clearance * 4441

SUPERSOLE® Men's 11-inch Pull-On Boot



: Features

Upper: Full Grain, Water-Resistant Velva Boomer Leather Steel

Toe: Toe

Rating: ASTM F2413-11, M/I/75/C/75, EH PR



Foot Protection

2226 / 2238

* Clearance

SUPERSOLE® Men's 6-8 inch Boot

2226
6-inch Boot



2238
8-inch Boot



ST EH



Features: 2226

Upper: Full Grain Turbo Vegas Leather

Toe: Steel Toe

Rating: ASTM F2413-11, M/I/75/C/75, EH

Features: 2238

Upper: Full Grain, Water-Resistant Brown Boomer Leather

Toe: Steel Toe

Rating: ASTM F2413-11, M/I/75/C/75, EH

R | W
LEATHER



SUPER+SOLE

XXXX

DEVON SAFETY BOOT



:Features

:Upper

:Sole

:Standards

Green PVC Black

PVC

EN ISO20345.S5



XXXX

Accessories



442
3M



450
3M



97200
Red Wing Socks



95190
Red Wing Ice Grips

3205 / 3207 * New

PETROKING LT MEN'S 6 / 8 -INCH BOOT



L-protection®
LENZI



Features:

Upper: Full Grain Brown Leather

Footbed: Nylon Covered Polyurethane

Toe: Non-Metallic Toe

Rating: ASTM F2413-11, M/I/75/C/75, EH PR

EN ISO 20345:2011 SB SRC P E WRU HRO FO

Size: 36 - 48



L-protection®
LENZI



Static-Dissipative



Waterproof

Head & Face Protection

A background image of an industrial worker in a blue uniform operating a yellow scissor lift. The scene is dimly lit, with a blue overlay on the left side where the text is placed. The worker is positioned on the right side of the frame, and the lift's structure is visible in the foreground and background.

List of Products

- Hard Hats
- Eye Protection
- Hearing Protection
- Dust Mask



Head & Face Protection

XXXX

Full Brim V-Gard Hard Hat w/Ratchet Suspension



Description:

These V-Gard® Protective Hats are the best-selling in North America. Polyethylene shell and self-adjusting crown straps provide comfortable, lightweight protection. Available in slotted style to work with MSA accessories.

Features:

- Polyethylene shell provides superior impact protection
- Self-adjusting crown straps ensure a comfortable fit
- Available in a variety of colors
- Custom imprinting and striping options
- ANSI/ISEA Z89.1-2009 (Class E, Type I)
- CSA Z94.1-2005 (Class E, Type I) when assembled with MSA Fas-Trac® (Ratchet)

PRODUCTS SPECIFICATION

Suspension Type: Fas-Trac (Ratchet) Suspension
Style: Full Brim
Material: Polyethylene/Plastic
Safety Rating: Class E
Accessory Slot: No

Colors Available:

	White		Grey
	Green		Red



XXXX

Suspension & Chin Straps



88128



XXXX

V-Gard® Protective Cap



Description:

These V-Gard® Protective Caps are part of the same family of products and accessories recognized as the best-selling in North America. Polyethylene shell and self-adjusting crown straps provide comfortable, lightweight protection.

- Polyethylene shell provides superior impact protection
- Self adjusting crown straps ensure a comfortable fit
- Available in a variety of colors and sizes

Features:

- Hardhats with reverse donning logo may be worn backwards without voiding approvals
- Slotted for use with MSA accessories and non slotted available
- Sizes: small (6" to 7'1/8"); standard (6'1/2" to 8"); large (7" to 8'1/2")
- Available colors: white, blue, yellow, gray, orange, red, green, hi-viz orange, hi-viz yellow-green, bright lime green, dark blue, gold, robin's egg blue, brown, silver, tan, black, light buff, purple, pink
- Special V-Gard assemblies also available: white w/L/B and C/H (Class C) and white with American flag
- Custom imprinting and striping available
- Slots designed to work with MSA accessories to help ensure compliance with both the helmet and the accessory

H8A

RATCHET HEADGEAR H8A



Description:

A combination headgear and faceshield safety system. Includes H8A ratchet headgear and WP96 polycarbonate faceshield. Adjustable ratchet suspension. Molded face shield provides impact protection. Requires protective eyewear, sold separately.

Features:

- Five position crown strap
- Meets the requirements of ANSI Z87.1-2003.
- Requires protective eyewear, sold separately.
- Helps offer durable head and face protection to workers in metalworking, utilities, wood working, and many other industries

1029693

Safety Goggles



Features:

- Splash and impact resistant
- Great fitting body provides all day comfort
- Anti-fog coating protects against mist
- Indirect vent allows air to circulate and reduce fogging

40661

Safety Goggles



Features:

- Splash and impact resistant
- Great fitting body provides all day comfort
- Anti-fog coating protects against mist
- Indirect vent allows air to circulate and reduce fogging

805635

Welding Goggles



Details:

Flip-up welding/grinding goggles with soft flexible vinyl frame and 50mm round green shade no.5 flip front lens. Can switch from welding to chipping for easy inspection. Can be worn over most spectacles. EN166. Application: Protects against radiation from gas welding activities, impacts from flying particles of low energy. liquid droplets, mist, crop spray and fine dust all accordance with cited standards.

XXXX

Welding Helmets



Description:

The PS-100 welding shield has been designed to provide enhanced comfort and protection. It features breathing vents which reduce CO2 built up providing welders superior comfort. Low weight of shield allows the welder to wear the shield for long duration without causing neck strain.

Features:

- Superior optical performance
- Side exhaust vents
- High-comfort headband
- SideWindows Shade 5

Head & Face Protection

1100 & 1101 EARPLUGS



Features:

- Smooth, dirt resistant surface provides better hygiene
- Tapered design fits comfortably in earcanals
- Soft polyurethane foam is hypoallergenic
- Noise Reduction Rating (NRR) 29 dB, CSA Class AL
- Roll down earplugs, made from soft hypoallergenic foam material for lower pressure inside the ear
- The tapered design fits most ear canals and is making the plugs easier to use

312-1221 E-A-R TAPERFIT 2



Features:

- Soft polyurethane foam earplugs
- Flexible cord connects earplugs
- Noise Reduction Rating (NRR)*: 32 dB. CSA Class AL
- Test compatible with 3M E-A-Rfit Validation System
- Large size TaperFit 2 fits larger earcanals comfortably
- Poly bag keeps each pair of earplugs available or accessible for re-use
- Soft polyurethane foam earplugs

1436 * Clearance Passive Ear Muffs



Features:

- Can be folded for ease of storage when not in use
- Dielectric- no metal parts
- One size fits all
- Soft wide cushions helps reduce pressure around the ears and improves comfort and wearability
- Bright orange colour to help increase visibility and improve compliance

Standards & Approvals:

Tested to AS/NZS 1270:2002 and CE approved against the European Standard EN352-1:2002.

H9P3F EARMUFFS



Description:

3M™ Peltor™ Optime™ 101 dBA dielectric cap-mounted earmuffs feature a stainless steel headband for consistent force and effective hearing protection.

Features:

- Dielectric
- Cap-mounted design allows for easy use with most hard hats.
- Color-coding for compliance sighting.
- Noise Reduction Rating (NRR)*: 24 dB. CSA Class A.

3M Chemical Apron



Features:

Delivering long-lasting protection against chemical splash, these high-performance aprons are ideal for a range of industries. This reusable protection offers excellent resistance to acids, alkalis, and other commonly used industrial chemical

8515 Nose Filter



Features:

- Economical filtering facepiece particulate welding respirator
- Flame resistant as demonstrated per modified ASTM D2859
- Adjustable M-noseclip reduces potential for eyewear fogging
- Braided headbands help provide a secure fit

P95 Disposable Particulate Respirator



Features:

- Exhalation Valve
- Nose Clip
- Face Seal
- Dual, Adjustable Respirator Headstrap Type
- Universal Mask Size
- Nuisance Odor Removal

Hand Protection

Gloves Standards

EN 388:2003

Mechanical Hazards



- A: Abrasion Resistance (0-4)
- B: Cut Resistance (0-5)
- C: Tear Resistance (0-4)
- D: Puncture resistance (0-4)

EN 374:2003

Chemical Hazards



Resistance to “permeation” by chemicals. The 3-digital alphabetical code refers to the code letters of 3 chemicals (from a list of 12 standard defined chemicals) for which a breakthrough time >30 minutes has been obtained. Rating 1-6 (10-480 minutes).

- A: Methanol
- B: Sodium hydroxide 40%
- L: Sulphuric acid 96%

Low Chemical Resistant



Waterproof glove pictogram is under for those gloves that do not achieve a breakthrough time of >30 minutes against at least three chemicals from the defined list of 12, but which comply with the penetration test.

Micro-Organism Hazards



Penetration: air and/or water leak test and inspection in compliance with the Acceptable Quality Level (AQL).

Level 3 - AQL <0,65 / G1



Hand Protection

ATG 42-874

MaxiFlex® Ultimate



Now the iconic MaxiFlex® gets even better thanks to the inclusion of the new AD-APT® Technology from ATG®. MaxiFlex® is dermatologically accredited and pre-washed prior to packaging to guarantee freshness.

Features:

- Dry Environment Applications
- General Purpose, Lightweight, Precision Handling
- Abrasion Resistance, Nitrile Coating

ATG 44-3745

MaxiCut Ultra



CUT 5



MaxiCut® Ultra™ is ATG's latest cut offering for dry environments that integrates the core values of MaxiCut® into a thinner, more comfortable and durable package.

Features:

- Wet and Oily Applications
- General Purpose, Lightweight, Precision Handling
- Abrasion Resistance, Superior Grip

ATG 56-426

MaxiDry Driver Style



Features:

- Abrasion Resistance
- Precision Handling
- Sanitized®, Superior Grip

ATG 56-635

MaxiChem



Features:

- Chemical Application
- Tested and Certified according to EN-374-3
- Abrasion Resistance

ATG 34-450

MaxiCut Dry



CUT 3



Features:

- Cut Resistance Application, Cut Protection (Level 3)
- Breathable, Lightweight, Precision Handling
- Abrasion Resistance

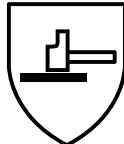
P130

TorSafety



CUT 3

EN 388



4341EP

 **TorSafety®**

Features:

- Synthetic leather palm enhances grip in dry and light oil applications while providing dexterity
- Double PVC sandy grip and full finger provides an enhanced grip with an extra cut and abrasion resistance
- Foam laminated spandex fabric lining for comfort and breathability
- Kevlar Glass Fabric lining for anti-blade Cut Level 3
- Thermo Plastic Rubber (TPR) molded finger thumb and back hand guards for maximum protection.

Technical Data

- Material:** Kevlar Glass / Synthetic Leather / Spandex PVC grip / Neoprene
- Construction:** Hi-Vis Yellow/Green Spandex Fabric (96% Nylon, 40% Polyurethane) 0.8mm gauge
- Fingers:** Synthetic Leather (60% Nylon, 40% Polyurethane), 0.8mm gauge
- Colour:** Hi-Vis Yellow Green / Blue / Black

2021

Rig Lizard®



EN 388



4343CP

CUT 3

 **HexArmor**

Features:

- Durable TP-X® palm utilizes the highest-level abrasion resistance while maintaining oil-resistant grip
- SEA level 3 cut and level 4 puncture protection

4021 * Clearance Price

GGT5® Mud Grip®



EN 388



4544FP

CUT 5

 **HexArmor**

Features:

- SuperFabric® brand material palm provides ISEA level 5 cut resistance
- Durable TP-X® palm reinforcement utilizes the high-level of abrasion resistance

4032 * Clearance Price

Chrome Core



EN 388



4521

CUT 5

 **HexArmor**

Features:

- Made with SuperFabric® brand material for the highest cut-resistance available on the market, exceeds ISEA Level 5
- Oil & abrasion-resistant synthetic leather palm enhances grip in dry & light oil applications, while providing dexterity to utilize tools & equipment

Hand Protection

2631

SACLA Welding Gloves



Material:

- Split cow leather

Cuff:

- Split, 15 cm

Interior:

- Thick lining

Colour:

- Red

XXXX

Rigger Gloves



Description:

Premium quality split leather chrome rigger with red cotton drill back and knuckle protection. Rubberized safety cuff and integral vein patch. For use in construction, mining, landscaping, etc.

- CE certified
- Rubberized safety cuffs
- Knuckle back protection
- Cotton backing for breathability
- For use in construction, mining and landscaping
- Premium quality split leather rigger

XXXX

Red Dotted Gloves



Features:

- PVC dotted gloves 12 ounce
- Made of cotton
- Flexible, breathable and comfortable

Ansell

Touch N Tuff



Features:

- Made with SuperFabric® brand material for the highest cut-resistance available on the market, exceeds ISEA Level 5
- Oil & abrasion-resistant synthetic leather palm enhances grip in dry & light oil applications, while providing dexterity to utilize tools & equipment

Fall Protection



Fall Protection

XXXX

EXOFIT™ 1100300 / DELTATM 1102008



Features:

- Built-in shoulder, back and leg comfort padding
- 18" back D-ring extension
- Body belt/hip pad with back D-ring
- Seat sling with positioning D-rings
- Integrated derrick belt connection (shown with)
- Quick connect chest strap
- Tongue buckle leg straps
- Soft, lightweight webbing
- Anti-tear ballistic nylon
- Built-in reflective piping
- Parachute torso adjusters

XXXX

Lanyards & Accessories



ShockWave™ 2 100% TieOff Shock Absorbing Lanyard. Model: 1244412

EZStop™ 100% TieOff Shock Absorbing Lanyard. Model: 1246029

Tagline for Self Retracting Lifeline. Model: 7211856



Rescue/Retrieval Y-Lanyard with Spreader Bar. Model: 1234160

Saflok™ Carabiner. Model: 2000114 & 2000112

Model 1244412:

- 6 ft. (1.8m) double-leg 100% tie-off lanyard
- Stretches in reaction to your movements

Model 1246029:

- 4 ft. (1.2m) double-leg 100% tie-off lanyard
- Extremely compact and lightweight

Model 7211856:

- Tagline for self retracting lifeline
- 50 ft. (15 m) 3/16" (5 mm) polypropylene rope
- Attached steel O-ring

Model 1234160:

- 2 ft. (0.6 m) rescue/retrieval Y-Lanyard
- Keeps victim upright during rescue

Model 2000114 & 2000112:

- 2-3/16 in. (55.5mm) gate opening steel carabiner
- Self closing and locking gate for added safety

AG399

3M | DBI-SALA SALAlift II Winch, 60 ft. Galvanized Steel Cable 8102001



Features:

- installType:Portable
- LifelineMaterial:1/4 in. (6.3 mm) Galvanized Steel Wire Rope
- (LifelineLength:60 ft. (18 m)
- (Weight:38lbs. (17.2 kg
- (Capacity:350lbs. (159 kg
- SalaliftII winch with 60 ft. (18 m) of 1/4 in. (6.3 mm) galvanized steel wire rope and swivel snap hook, mounting bracket and carrying bag
- GearRatio Mechanical Advantage - Easy operation, gear ratio 6:1 is 6:1 with an average lifting speed of 0.06 m/sec
- FreeWheel Mode - allows the drum to rotate and cable to pay-out freely as the attached worker descends or moves about
- Built-In Overload Clutch - automatically slips to prevent severe overloading or damage; it also helps prevent injury to entangled personnel during raising operation

8301031

ADVANCED TM ALUMINUM TRIPOD WITH SEALED BLOK TM 3WAY SRL



Features:

- 7 ft. (2.1 m) aluminum tripod (model 8000000)
- Telescoping adjustable locking legs
- Built-in pulley system
- Specialized safety shoes and leg support chain
- Integrated 5,000 lb. (22 kN) eyebolt anchor points
- Environmentally sealed self retracting lifeline (model 3400924)
- 3-way emergency retrieval system
- Crank handle has built-in brake
- Built-in winch drive overload device
- 50 ft. (15m) 3/16" (5mm) stainless steel cable lifeline
- Reserve lifeline system
- Swiveling snap hook with impact indicator
- Quick connect winch/SRL mount bracket
- Equipped with i-SafeTM



3M DBI-SALA Sealed-Blok 3400932 Self Retracting/Rescue Dual Mode Lifeline, 50-Foot, 3/16-Inch SS Wire, Swivel Snap Hook, Carabiner, 4-Foot Cable Tie-Off Adaptor, Yellow

Features:

- Environmentally sealed dynamic components
- Extremely durable construction
- Anti-ratcheting locking system
- Built-in carrying handle
- 50 ft (15m) of 3/16" (5mm) stainless steel wire rope with swivel snap hook, RSQ dual-mode, anchorage carabiner, 4 ft (12m) cable tie-off adaptor
- For industrial/occupational use only



A firefighter in a trench coat is looking out of a window at a fire at night. The fire is bright orange and yellow, with smoke rising from it. The firefighter's face is partially visible in the foreground, looking out the window. The window frame is visible, and the fire is outside. The scene is dimly lit, with the fire providing the main source of light.

Gas Detection, Respiratory Protection & Fire Fighting

List of Products

- Gas Detection
- Respiratory Protection
- Supplied Air Respirators
- Breathing Apparatus
- Fire Fighting & Emergency

Gas Detection

BW Technologies

Single Gas Detector - H2S



Features:

- Compact and lightweight design makes it comfortable to wear
- Water-resistant
- Compatible with BW MicroDock II automatic test station
- Full function self-test of sensor, battery status, circuit integrity and audible/visual alarms
- Bright wide-angled visual alarm bars
- Built-in concussion-proof boot

BW Technologies

Multi Gas Detectors



Features:

- Continuous LCD shows real-time gas concentrations
- Water-resistant
- Compatible with BW MicroDock II automatic test and calibration station
- Built-in concussion-proof boot
- Full function self-test of sensor, battery status, circuit integrity and audible/visual alarms on start up

Honeywell

Microdock II



Cylinders

Microdock II:

- Quick and easy compliance - automatically maintain accurate records
- Automatic bump testing, calibration, record keeping and charging
- One base station with one AC outlet supports up to six modules to suit your application
- Verifies proper performance of detectors
- Reduces maintenance costs

MSA Cylinders:

- Four Gas RP (1.45 % CH₄, 15.0% O₂, 60 ppm CO, 20 ppm H₂S) - Altair 4/5, Solaris, Sirius

S4000TH H2S Gas Detector



Features:

- The S4000TH Intelligent Gas Sensor is a microprocessor-based transmitter designed for use with General Monitors' thin film metal oxide semiconductor (TFMOS) sensors to detect H₂S gas. The unit features one person calibration and can virtually self-calibrate by simply activating a magnetic switch and applying gas. It detects hydrogen sulfide in 0-20 ppm, 0-50 ppm or 0-100 parts per million (ppm) levels over a wide temperature range.

Respiratory Protection

6000 SERIES

3M Face Mask and Cartridges



3M 6001



3M 6003



3M 6002



3M 6006



3M 6000 SERIES FULL MASK RESPIRATOR:

- Soft, non-allergenic elastomeric facepiece
- Extremely lightweight, only 400g for high comfort
- Full Face lens with broad field of vision and scratch resistant (EN166:2001 B)
- Well balanced four strap head suspension

SIZES AVAILABLE

6700	Small
6800	Medium
6900	Large

3M 6000 SERIES HALF MASK RESPIRATOR:

- Head harness cradle suspension is designed for a comfortable fit
- Lightweight elastomeric material
- Low profile design minimises interference with field of view
- Twin filter design provides lower breathing resistance

SIZES AVAILABLE

6100	Small
6200	Medium
6300	Large

3M 6001:

- NIOSH approved for protection against certain organic vapors

3M 6002:

- Acid gas cartridge

3M 6003:

- NIOSH approved for protection against certain organic vapors or acid gases

3M 6006:

- NIOSH approved for protection against certain organic vapors, acid gases, ammonia, methylamine and formaldehyde

Supplied Air Respirators

SCBA

SCOTT CONTOUR 100 SCBA



Features:

- Kevlar blend non-padded webbing harness
- Ergonomically designed, strong and lightweight injection moulded backplate
- Flame retardant webbing
- Mask and cylinders purchased separately
- Certified to AS/NZS 1716:2012
- Approved to EN137:1998 Type 1

SCBA

SCOTT Propak



Features:

- Proven Tempest demand Valve
- Trusted high performance pneumatics
- 100% Kevlar webbing
- Easy adjust parachute style buckles
- Rapid adjust cylinder band design
- Easy upgrade path
- Approved to EN137:2006 Class II, incorporating the stringent flame engulfment test



SCBA

Scott Flite Airline Breathing Apparatus



Features:

- Simple operation
- Adjustable and padded webbing bandolier harness for comfort and safety
- Used with Scott Safety Promask PP or Vision 3 Full Face Masks
- Optional hip mounted escape cylinders
- Face Mask and Cylinders purchased separately
- Certified to AS/NZS 1716:2012

SCBA

Scott CEN-PAQ



Features:

- Simple operation
- Adjustable and padded webbing bandolier harness for comfort and safety
- Used with Scott Safety Promask PP or Vision 3 Full Face Masks
- Optional hip mounted escape cylinders
- Face Mask and Cylinders purchased separately
- Certified to AS/NZS 1716:2012

Scott

Elsa Escape Respirator



Features:

- Pressure gauge on cylinder valve verifies cylinder pressure at a glance
- Elastomeric neck seal allows for easy donning, proper neck fit and repeated usage
- Clear polyurethane hood provides 360° visibility
- Easily detachable hood for cleaning and replacement
- Safety orange PVC coated polyester bag is easy to maintain and resists aging
- Can be worn on shoulder or neck
- Donning instructions printed on pouch

Scott

CYL-1200



Features:

- 6.0 litre, 200 bar, steel cylinder, CE specification, painted to BS specification, complete with cylinder valve fitted with safety locking handwheel
- 1200 litre free air capacity providing total duration of 30 minutes
- 242.00
- Dimensions: 140mm diameter x 600mm long
- Fully Charged Weight: 8.8kg

Fire Fighting & Emergency

XXXX

Fire Fighting PPE



XXXX

Fire Blanket



XXXX

Fire Extinguisher



XXXX

Eye Wash Station



XXXX

First Aid Kit



XXXX

Cones and Tapes



Red Wing

PPE Bags



69019



69101



69100

Fire Fighting & Emergency

XXXX

Spill Kits



XXXX

Emergency Showers



Location



Baghdad

Baghdad, Iraq

T +964 751 666 77 33
T +964 770 871 67 67
T +964 751 065 12 43

Erbil

Pank City
Old Baharka Road
Erbil, Kurdistan, Iraq

T +964 751 666 77 33
T +964 770 871 67 67
T +964 751 065 12 43

Basra

Istiklal Street, Basra,
Iraq

T +964 751 666 77 33
T +964 770 871 67 67
T +964 751 065 12 43



Pank City
Old Baharka Road
Erbil, Kurdistan, Iraq

T +964 751 666 77 33

T +964 770 871 67 67

T +964 751 065 12 43

Dubai | Erbil | Baghdad | Basra | Amman

info@ironshield-iq.com

hussein.falah@ironshield-iq.com